



© Yannick Andrea - WWF

Jan 2024

WWF Employee Engagement

Corporate Volunteering Events

Catalogue 2024

Team events in the name of nature

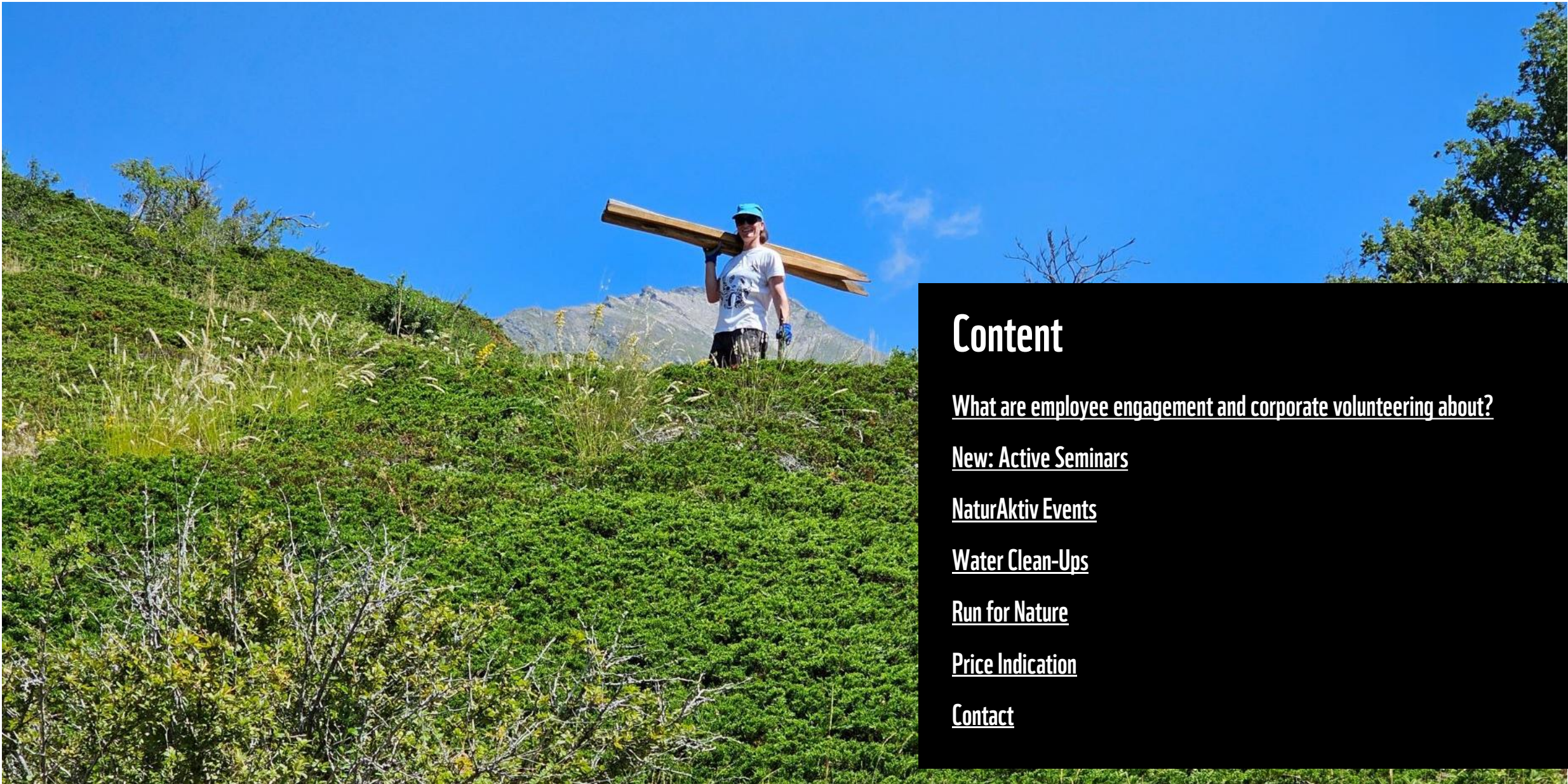
More and more companies are recognizing sustainability as a core concept of our time. Are you one of them? Would you like to make a tangible and far-reaching commitment to the preservation of biodiversity and sustainable change?

WWF offers you the opportunity to make a practical commitment to the environment, acquire specialist knowledge and at the same time promote team cohesion.

[Click here to contact us directly!](#)



© WWF



Content

[What are employee engagement and corporate volunteering about?](#)

[New: Active Seminars](#)

[NaturAktiv Events](#)

[Water Clean-Ups](#)

[Run for Nature](#)

[Price Indication](#)

[Contact](#)

What are Employee Engagement and Corporate Volunteering about?



Through a realistic and hands-on engagement with sustainability topics, your employees will embrace cultural and behavioral changes.

WWF is one of the most experienced providers of corporate volunteering in Switzerland and has been successfully carrying out team events for the environment since 2011.



New: Active Seminars

Would you like to expand your knowledge and spend time in nature at the same time? In our **new seminar format**, you will learn about **biodiversity** on site in a **practical and experience-based way**.

With WWF, you can get out of the office and **into nature**.

© Alfred Matthias

Active Seminar «Bats»



© Isabelle Bögli

Make a contribution to nature to benefit our local bats! The mysterious, nocturnal mammals feed mainly on insects and beetles, which we can foster with various activities.

After an active afternoon, you will learn about the requirements of the fascinating bats with a bat expert. How many bats are there in Switzerland? What do bats eat? What do they help us with and what can we help them with? These and many more questions are answered. After this playful and interactive theoretical part, it's slowly getting dark outside. Equipped with an ultrasound device on a night safari, we track down the bats. With a bit of luck, we will see the nocturnal hunters catching prey and will be able to listen to them hunting.

Possible tasks:

- Create piles of branches / stones
- Forest / forest edge maintenance
- Plant native trees, sow night-blooming plants
- Keep fallow areas / plant flowering strips, hedges, trees
- Plant or maintain riverbanks with willow, alder or other shrubs
- Create a pond
- Water Clean-Up

Availability: May-June and August-September

Duration: 7 h (afternoon incl. evening) or 5h after-work-event

Physical activity

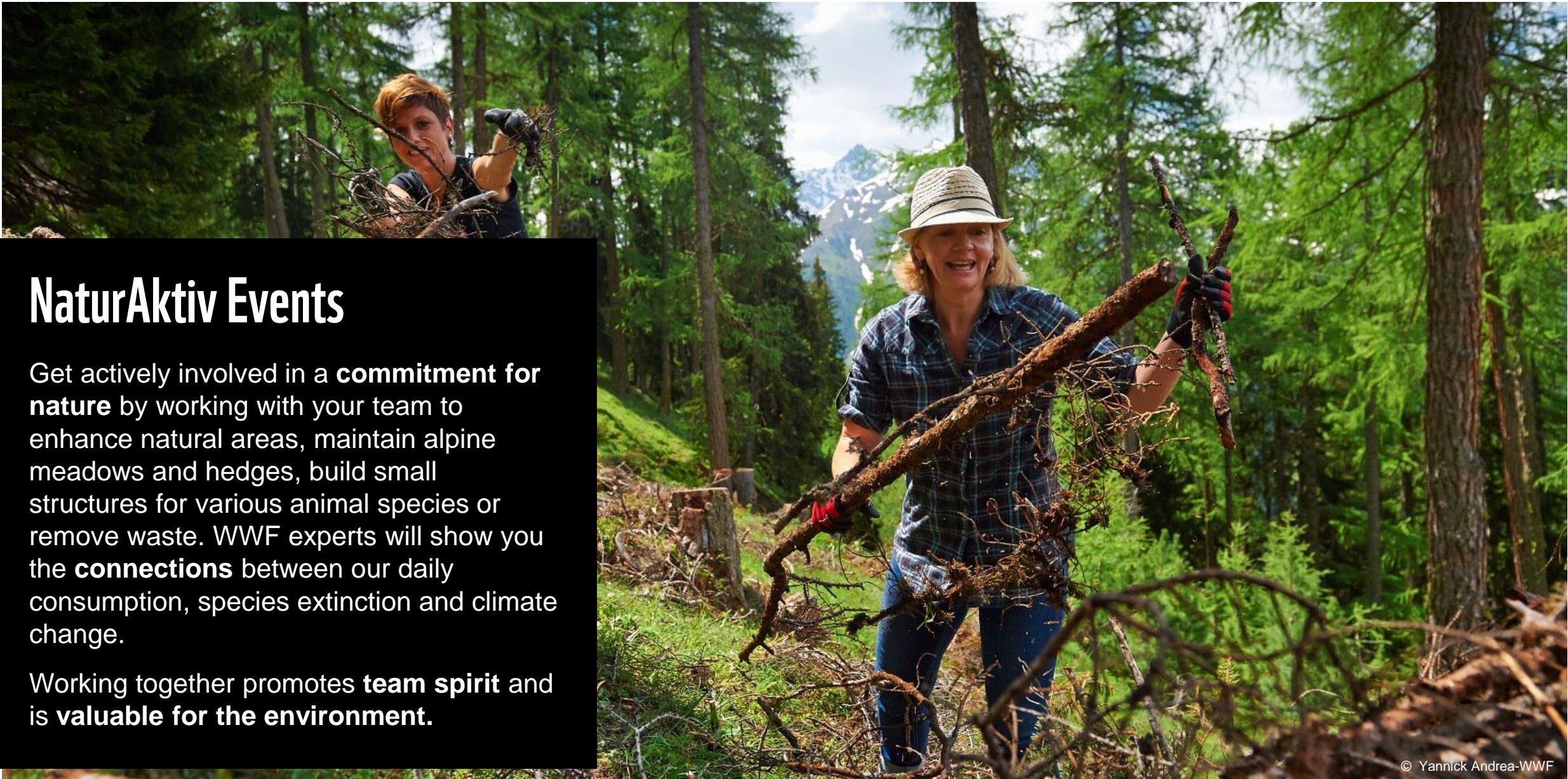


Team building



Input





NaturAktiv Events

Get actively involved in a **commitment for nature** by working with your team to enhance natural areas, maintain alpine meadows and hedges, build small structures for various animal species or remove waste. WWF experts will show you the **connections** between our daily consumption, species extinction and climate change.

Working together promotes **team spirit** and is **valuable for the environment**.

© Yannick Andrea-WWF

Our locations



Powered by Bing
© GeoNames, Microsoft, TomTom



Herzberg

This adventure is practical and close! The colorful dry meadows in the Jura region around the *Herzberg* are among the most species-rich habitats in Switzerland. This natural diversity must be preserved - will you join us?

Possible tasks:

- We maintain and clear the dry meadows.
- We create small structures for various animal species (stone and branch piles, small animal hotels).
- We look after hedges, the home of birds.

Availability:

all year round

Physical activity



Team building



Input





Allmid Gantrisch Nature Park

The *Allmid* is located in Helgisried and is situated in the *Gantrisch Nature Park*. This park was certified as a Regional Nature Park in 2012 and covers an area of 400 km².

Look forward to working together with Rosetta Bregy, agricultural expert Rolf Scheidegger, and the WWF to construct nesting opportunities for small animals, contribute to hedge maintenance, and enjoy the beautiful landscape.

Possible tasks:

- We trim and maintain hedges.
- We plant hedges and orchards.
- We construct shelters for small creatures such as hedgehogs, birds, and others.
- We take care of the natural habitat in and around the pond.

Availability:

April to October

Physical activity



Team building



Input



Frutigen: Building bee hotels

Together we dive into the unique world of wild bees. Setting up a wild bee hotel makes a significant contribution to nature conservation and supports wild bees, some of which are classified as endangered. A wild bee hotel is specifically tailored to the needs of wild bees, unlike many other nesting aids and insect hotels.

Building a bee hotel for different species is a diverse task where everyone can work at their own pace and according to their own needs. We'll drill, saw, sand, and assemble the hotel. Exciting insights into wild bees as a species are also part of the experience.

The location for this activity is the "Little Nepal" farm of Andreas Weber and his team. This place not only serves as a picturesque venue but also as a platform for people interested in learning, practicing, and evolving towards a simple and sustainable lifestyle.

Possible tasks:

- Drilling, cutting, screwing
- Preparing material

Physical activity

Team building

Input



Availability:

May to October



© Andreas Weber

Frutigen: Building bird houses and feeding sites

The intensive use and fertilization of meadows pose a threat to birds by drastically reducing the insect population. This issue has already reached the foothills of the Alps. Almost all bird species rely on insects for feeding their young. Additionally, birds have lost much of their natural habitat in recent decades.

At this event, we will collectively build birdhouses that can serve as nesting places for wild birds. We will also create feeding sites for the birds. Throughout the activity, we will learn a lot about the bird world.

The location for this event is the "Little Nepal" farm of Andreas Weber and his team. This place not only serves as a picturesque venue but also as a platform for people interested in learning, practicing, and evolving towards a simple and sustainable lifestyle.

Possible tasks:

- Drilling, cutting, screwing
- Preparing material

Physical activity

Team building

Input



Availability:

May to October



Bernese Oberland



Griesalp

The event at the enchanting *Griesalp* in *Kiental* offers a unique opportunity to actively contribute to the environment. Embedded in the UNESCO World Heritage Jungfrau-Aletsch region, Griesalp presents itself as a fascinating area with impressive biodiversity.

This event not only provides the chance for hands-on nature work but also for engaging conversations with WWF experts. Additionally, you'll experience the authentic Alpine lifestyle (**without mobile reception**). In between, you can treat yourself with local specialties, which makes the Griesalp experience a holistic and enriching day that not only supports the environment but also strengthens the team spirit.

Possible tasks:

- We maintain alpine pastures.
- We construct branch and stone piles that serve as habitats for various animals.

Availability:

May to October

Physical activity



Team building



Input



© Adriana Puente-WWF



© Andreas Weber



© Andreas Weber



Grüezi Garte, Farm Unterstock - Allenwinden-Baar ZG

In the "*Grüezi Garte*" on a sunny terrace of the Zugerberg, collaborative vegetable cultivation is practiced alongside extensive animal husbandry. The farm is a versatile, biodiverse place of experience which can be used as a meeting place and a tranquil oasis, inviting people to explore, enjoy, or get their hands dirty. As the goal is to make agriculture and gardening as climate, soil, and environmentally friendly as possible, a lot of manual work is required.

In this endeavor, you will gain insight into an organically managed vegetable farm and contribute to the diversity of habitats for the local flora and fauna.

Possible tasks:

- We are constructing a habitat for frogs, toads, and dragonflies.
- We are planting hedges and fruit trees.
- We are building a stone wall terrace for a herb garden.
- We are weeding and combating problematic invasive plants.

Availability:

March to October

Physical activity

Team building

Input





Lake Walen, St. Gallen and surroundings

Eastern Switzerland is characterized by biological wealth. From fens to dry meadows, valuable forest communities to structurally rich Alps and cultural landscapes: The (Alpine) landscape around *Lake Walen*, the *Toggenburger* or *Sarganserland* and the *St. Gallen* area are home to various animal and plant species such as capercaillie, weasels and the like.

Enjoy the warm hospitality and regional specialties and go home with the feeling of having done something worthwhile.

Possible tasks:

- We cultivate organic vineyards.
- We enhance forest edges and alpine meadows.
- We create valuable structures for the promotion of species.
- We build dry stone walls and plant bushes.
- We maintain wetlands.

Availability:

April to October

Physical activity



Team building



Input





Thurgau - Camel farm Olmerswil, Neukirch / Thur

As a special adventure farm the *Camel farm Olmerswil* offers a wide variety of activities. Ecologically valuable structures are preserved, promoted and newly created across the entire site, be they animal enclosures, buildings or gardens. As a result, many valuable habitats have been created on the former conventional farm. You will also get to know the unusual animals that live on the farm.



© Kamelhof Olmerswil

Possible tasks:

- We plant hedges.
- We build dry stone walls and weasel castles.
- We create a nature trail.
- We renew deadwood hedges on the camel pasture.
- We help with forest care.
- We are creating a wildflower meadow.
- We help clean and naturally enhance the stream and remove invasive plants.

Availability:
April to October





Geneva, Lausanne and Alpes Vaudoises

The ecosystem and biodiversity are also under pressure in *French-speaking Switzerland*. With us you can contribute with concrete measures on a farm or in the alps and learn exciting things about nature.

Let yourself be pampered with warm hospitality and regional specialties and go home with the feeling of having done something worthwhile.

Possible tasks:

- We plant hedges/fruit trees.
- We tackle invasive plants.
- We collect waste and plastic.
- We maintain biotopes.

Availability:

March to May and
September to December

Physical activity

Team building

Input



Lower Engadine



Ardez, Guarda, Tarasp, Vnà, Sent and Lavin

A magnificent Alpine world! Experience the nature, culture and hospitality of the Engadine while you contribute to the preservation of this beautiful landscape.

Possible tasks:

- We cut emerging trees or shrubs in dry pastures and fens.
- We gather stones and branches into piles.
- We mow unused fens.
- We collect waste along the Inn.
- We plant fruit trees (only in spring).

If desired, the program can be expanded, e.g., by producing cheese on the Alp using traditional methods.

Availability:

May to October

Physical activity



Team building



Input



© Yannick - Andrea-WWF



Balsthal - Thal Nature Park

Thal Nature Park is embedded in the mountain ranges of the *Solothurn Jura*, situated between Weissenstein and Wasserfallen in the catchment area of Basel, Bern, and Zurich. Over decades, the landscape has undergone changes, with an increasing loss of small structures and the destruction of habitats and shelters for many animals. The two native species of weasels (stoat and mouse weasel), being the smallest predators in Switzerland, depend on such structures, just like many other animals.

Join us in building these small structures and, in the process, learn fascinating facts about the animals and the entire ecosystem. Your involvement will make a significant contribution to the preservation of these species.

Possible tasks:

- We construct brushwood and stone piles.
- We trim and maintain hedges.
- We maintain and enhance the forest edge.
- We maintain and enhance forest pastures and dry meadows.

Availability:
March to April and
August to November





Bolle di Magadino & Gole della Breggia

Experience the special diversity of birds in the protected areas near *Lake Maggiore (Bolle di Magadino)* and in the unique park in the *Mendrisiotto region (Gole della Breggia)*, which has gorges and a cement factory converted into a museum.

Surrounded by nature, forests and exciting geology, there is the opportunity to participate in the conservation of areas of national importance.

Possible tasks:

- We maintain and remove bushes from open areas.
- We eliminate unwanted plant species.
- We plant hedges.
- We collect waste and plastic.

Availability:

March to May and
September to
November

Physical activity

Team building

Input



© WWF



Cantina Cavallini & Seminterra

At an organic winery (*Cantina Cavallini*) or in an agricultural cooperative (*Seminterra*) you have the opportunity to learn about innovative and biodiversity-friendly farming methods. You can also try local products.

Possible tasks:

- We maintain and remove bushes from open areas.
- We eliminate unwanted plant species.
- We plant hedges and take part in the harvest.
- Participation in the project «Natur verbindet».

Availability:

March to May and September to November

Physical activity



Team building



Input



Ausserberg

Flora and fauna as well as the surprisingly Mediterranean-looking character of the landscape in Ausserberg are unique! The area is characterized by beautiful dry meadows, which are among the most species-rich habitats in Switzerland. However, because they are cultivated less and less in these not so productive locations, they are at risk of becoming overgrown, which leads to a loss of biodiversity.

During your environmental work, the focus is on preserving these dry meadows. We also help to protect the meadows with a wolf-proof fence. You will learn lots of interesting facts about the local fauna, flora and regional culture. Your physical well-being will be catered for with delicious specialties from the region.

Possible tasks:

- We build a wolf-proof meadow fence.
- We remove bushes from dry meadows.
- We maintain hedgerows and forest edges.
- We build piles of stones and branches.

Availability:

April to October

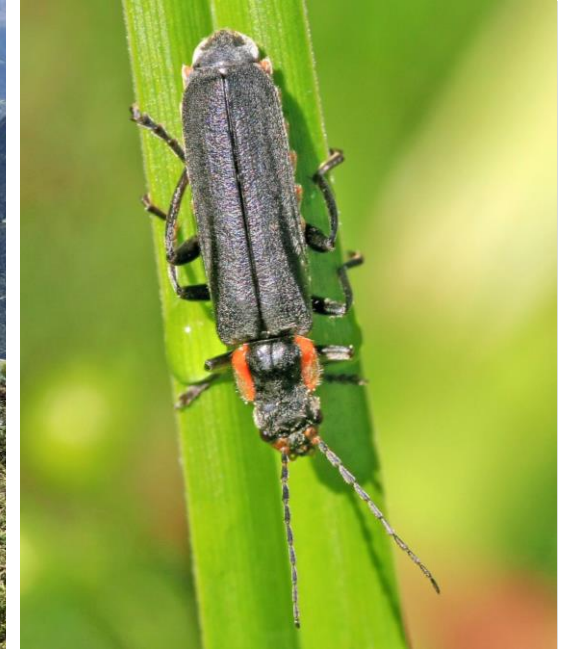
Physical activity



Team building



Input



© WWF



Off into the forest! Region Zurich

As a team event and active seminar, “Off into the forest!” connects informative input on the topic of forests with the joy of tackling things together for a sustainably meaningful purpose out in nature.

In our forest event, we actively support private forest owners in particular in their efforts to achieve future-oriented forestry. You and your team will make an important contribution to the forest of the future. The encounter with the respective district foresters also offers the opportunity to find out first-hand useful background information about sustainable forestry.

Possible tasks:

- Young forest care by removing blackberries or building tree protection
- Cut the clearance profile along path networks
- Clearing areas after felling in preparation for new planting
- Eliminate neophytes
- Forest edge maintenance, biodiverse enhancement of forest edges
- New wood plantings
- Helping to create a forest garden

Availability: September to beginning of April (possibly in other months)

Duration: ½ day
(possibly a whole day)

Physical activity	
Teambuilding	
Input	

Stettbach

The *Allmend* in *Stettbach*: A small piece of wild nature in the Zurich conurbation, created from the excavation of the Zurichberg Tunnel.

The exciting and sensitive dry steppe requires regular care to maintain the highly specialized animal and plant community. Help us and experience the diversity and beauty of this rare type of landscape.

Possible tasks:

- We remove young bushes.
- We sometimes plant new plants to enrich biodiversity.
- We combat problematic invasive plants.
- We collect waste and plastic.
- We create ecological structures from dead wood.

Availability:

March to May and September to December

Physical activity



Team building



Input



© Adriana Puente, Thomas Trchsel



Zurich wine region - Grüthof

The *Grüthof organic farm* produces high-quality and nutritious food and is committed to promoting biodiversity. Therefore, a flower meadow was sown, a hedge was planted, and a standard orchard was created on what was once arable land.

Let Beatrice Peter, who is both a farmer and a conservation biologist, explain the ecological connections in the meadows to you and immerse yourself in the world of meadow flowers and flower visitors. During this assignment, you will enjoy lunch with organic products from the farm and learn about organic farming at the same time.

Possible tasks:

- We remove problematic invasive plants.
- We promote rare species in the wildflower meadow.
- We maintain hedges and build small structures for weasels, hedgehogs, etc.
- We support the organic farm with manual work such as weeding and harvesting.

Availability:

March to November
(work in the flower meadow
in May/June)

Physical activity



Team building



Input



Example Program NaturAktiv



Program Aargauer Jura (AG)

Description

The colorful dry meadows in the Jura region around Herzberg are among the most species-rich habitats in Switzerland. After decades of extensive agricultural practices, it is now necessary to maintain their ecological balance. The less fertile patches are not very frequently farmed, and this can result in bushes to take over. This leads to the loss of their valuable species diversity. During your NaturAktiv day your task will be to tend this dry meadow and, depending on the season and needs, the construction of one or more habitats. During the mission you will learn interesting ecological facts about the value of this ecosystems.

Requirements

You should be in a fairly good shape, be able to hike and enjoy nature and culture to participate. The event takes place in every weather condition.

What to bring

- ✓ **Important! Hiking or trekking boots (ankle-high is recommended)**
- ✓ Working gloves (some are available to lend)
- ✓ Depending on the weather: Sunscreen, hat and sunglasses or rain protection
- ✓ Tick protection
- ✓ Robust clothing (possibly a fresh shirt for the way back)
- ✓ Filled water bottle

Arrival

Zürich HB from 07:38 AM
Aarau at 08:05 AM
Aarau from 08:17 AM
Benkerjoch, Passhöhe at 08:29 AM

Return

Benkerjoch Passhöhe from 04:25 PM
Aarau at 04:45 PM
Aarau from 04:54 PM
Zürich HB at 05:22 PM

Program

08:30 AM Short hike (20 min) to Bildungshaus Herzberg
08:50 AM Welcome and reception with coffee
09:00 AM Introduction to the region and its culture
09:30 AM Journey/hike to the working area
09:45 AM Landscape management
12:00 AM Lunch with local specialties
01:00 PM Input about the park and its ecology
01:30 PM Landscape management
04:00 PM Farewell and walk to the bus stop Benkerjoch Passhöhe

We are looking forward to your commitment!

Q & A



What do we offer?

Consultation: We arrange an individual program according to your needs. From half a day to an event lasting several days – we are happy to find the best option for you.

Many years of experience: WWF has been successfully carrying out corporate volunteering events since 2011, making it one of the most experienced providers on the market. During this time, friendships have been forged between participants and farmers. Countless volunteers have returned home from these events with tired hands and full hearts.

Duration: From half a day over one day to several days.

Group size: Groups from 5 participants, depending on location/activity.

Costs and services: Our price includes a fully organized day. We find a suitable location, draw up a safety concept, organize materials, tools and catering, develop an individual program and provide the specialists who will look after your employees throughout the day.



Water Clean-Ups

Plastic and other waste in and around our waters pose a real danger to animals and humans.

As a team, you can actively do something about it. On a "**clean-up**" day, you will clean a section of shore, categorize the waste, dispose of it properly and receive interesting input from our WWF experts.

Clean-Ups in Zurich, Winterthur, Eastern Switzerland, Basel, Lucerne, Lausanne or Lugano



Switzerland is known as a country of rivers and lakes. However, the "Swiss Litter Report" showed that many river and lake shores are littered. Plastic and other waste are not only an aesthetic problem, but also a waste of resources and a threat to animals and humans.

What we do:

- In a half-day "clean-up" we will work together to remove human waste from a section of the river bank.
- We talk about waste and sort and dispose of the materials professionally.
- You will receive interesting information about waste, plastic and consumption or about the salmon comeback from WWF experts.
- Optionally possible as a full-day assignment, e.g., with a visit to a sewage treatment plant or waste disposal power plant, where the topic can be experienced in greater detail.
- Also possible in combination with some workshops.

Availability:
March to October

Physical activity
Team building
Input



© Three Piece Media Production AB

Are you interested in a clean-up, but your employees work at different locations?



A clean-up can also be carried out online. In this session, you and your company can learn more about the plastic problem and find out how to recycle properly. Afterwards, you can do it yourself on your own doorstep.

Sharing is an important part of the learning process. This takes place in breakout groups in which experiences are exchanged and ideas are developed for everyday personal and professional life.

Availability:
all year round



Example Program Clean-Up (Half day)



Clean-Up Sihl, Zurich-City

Description

Switzerland is considered a clean country. But is our country as clean as we think? On International Clean-up Day 2020, 5,267 kg of trash were collected and properly disposed of at 41 locations throughout Switzerland. Plastic, cigarette butts, and other littering items in nature represent a gratuitous waste of resources and a real danger for humans and animals on land and in water: a wide range of toxins enter the soil and water through littering. The wind and the rain often carry the litter into lakes and rivers, ending up eventually in the sea.

Together with your company, we would like to help solve this problem. During your clean-up event, we will clean a section of the shoreline, categorize the waste, dispose of it properly and also get input on waste, plastics and consumption.

Requirements

- ✓ Good physical condition
- ✓ The event takes place in every weather condition. Make sure you are dressed appropriately.

What to bring

- ✓ Closed hiking / trekking shoes, possibly rubber boots / replacement shoes
- ✓ Depending on the weather: sunscreen, sun hat, sunglasses, or rain protection
- ✓ Robust clothing, long trousers recommended (stinging nettles, thorns, ticks)
- ✓ Filled water bottle

Program

- 13:30 pm Welcome with coffee/tee, introduction into the topic, estimation contest
- 14:00 pm Clean-Up
- 15:30 pm Break with a little snack / Input on topics waste, plastics, and consumption
- 16:00 pm Clean-Up
- 17:00 pm Weighing, sorting & disposal of the waste
- 17:30 pm End of the activity (near Zurich main station)

We are looking forward to your commitment!



Run for Nature

Get active and protect the environment at the same time - take part in the **WWF run in Zurich** or start your own running campaign with the **Pandanation!**

© kensho.fotografie

WWF Run in Zurich



The WWF run is fun and offers your employees a community experience that combines exercise, health and an active commitment to the environment. This year, the proceeds from the run will be used for WWF marine conservation projects.

What to expect:

- A meaningful event with which you can do something for your health and the environment together with your team colleagues.
- A beautiful running course on the Werdinsel.
- Individual running results shortly after the run.

Date:

Thursday, 19th September 2024, 6:00 – 7:00 PM

Contact and information:

www.wwf-zh.ch/laufen-als-firma

raymo.bucher@wwf.ch

Physical activity



Team building



Input



© WWF Zürich / Ullmann Photography

Pandanation - Move for Nature



Start your campaign for the environment when and where you want

Actively doing sport and supporting an environmental project at the same time is an unbeatable combination and an experience for the whole team. Whether it's a company run, city run or Ecotrail, you decide which event you want to take part in.

Post your campaign on www.pandanation.ch. This way you can collect donations for an animal or an issue of your choice.

What to expect:

Cool team event with an attractive "WWF goodie bag" and a modern, user-friendly online platform for individual donation projects.

Availability: individually

Contact: linda.mueller@wwf.ch

Physical activity



Team building



Input



© WWF Zürich

Price Indication 2024



NaturAktiv and Clean-Ups:

Number of participants	Guide price for ½ day event	Guide price for 1/1 day event
5 – 10	CHF 1'800	CHF 2'250
11 – 20	CHF 2'500	CHF 3'300
21 – 30	CHF 3'200	CHF 4'300
31 – 40	CHF 3'900	CHF 5'450
41 – 50	CHF 4'500	CHF 6'600
51 – 60		CHF 7'700

all prices are approximate guide prices in CHF excluding MWSt (VAT) and can vary depending on location and activity

We would be happy to provide you with a detailed offer.



Adriana Puente

Co-project manager
Corporate Volunteering



Manuel Baumgartner

Co-project manager
Corporate Volunteering



Frauke Schröder

Program coordinator
Corporate Volunteering

You can reach us via mail naturaktiv@wwf.ch



©

®

WWF